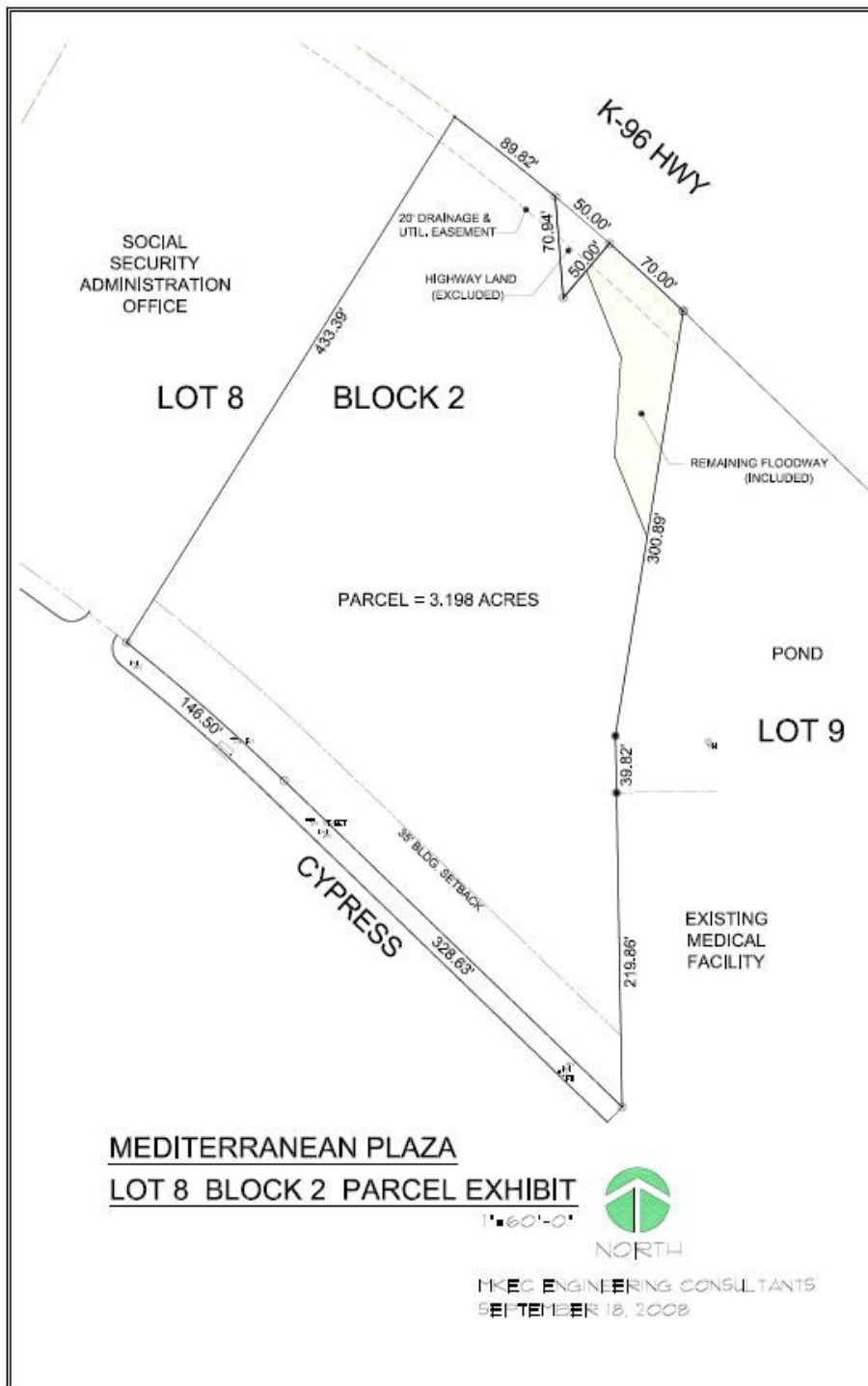


3.198 Acre Lot
Zoned Limited Industrial
(eligible for cell tower)
For Sale or Build-to-Suit
3216 North Cypress
Wichita, KS 67226



Marty Moody
316-634-6600 ext. 106
martym@vantagepointproperties.com
www.vantagepointproperties.com



**Potential
for a
35,000 sq.ft.
office
building.**

**Irregular shaped
with 475' frontage
on Cypress and 210'
frontage on
Highway 96.**

3.198 Acre Lot
Zoned Limited Industrial
(eligible for cell tower)
For Sale or Build-to-Suit
3216 North Cypress
Wichita, KS 67226



Marty Moody
 316-634-6600 ext. 106
 martym@vantagepointproperties.com
 www.vantagepointproperties.com



Amenities

- Dry Cleaning pickup and delivery
- Special reduction rates for:
 - Hair Salons
 - Movie Tickets
 - Residential pest control
 - Residential trash services
 - Restaurant/Hotel rates