

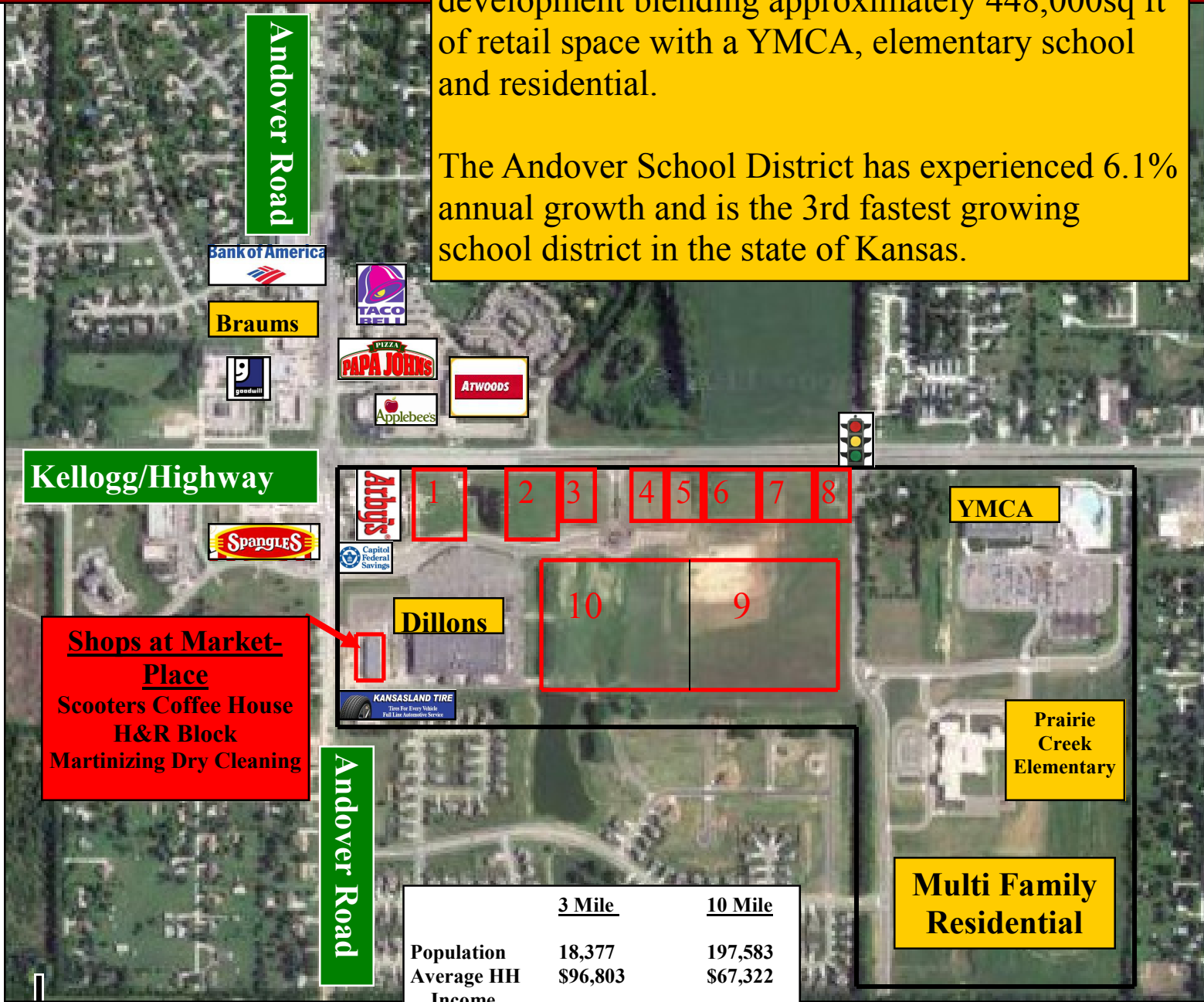


Andover MarketPlace Pad Sites

SEC Andover Road & Kellogg/HWY US 54
Andover, Kansas

Andover MarketPlace is a 160 acre mixed use development blending approximately 448,000sq ft of retail space with a YMCA, elementary school and residential.

The Andover School District has experienced 6.1% annual growth and is the 3rd fastest growing school district in the state of Kansas.



Shops at Market-Place
Scooters Coffee House
H&R Block
Martinizing Dry Cleaning

Anchors

Dillons Grocery 125,000sf
YMCA 115,000sf

Traffic Count

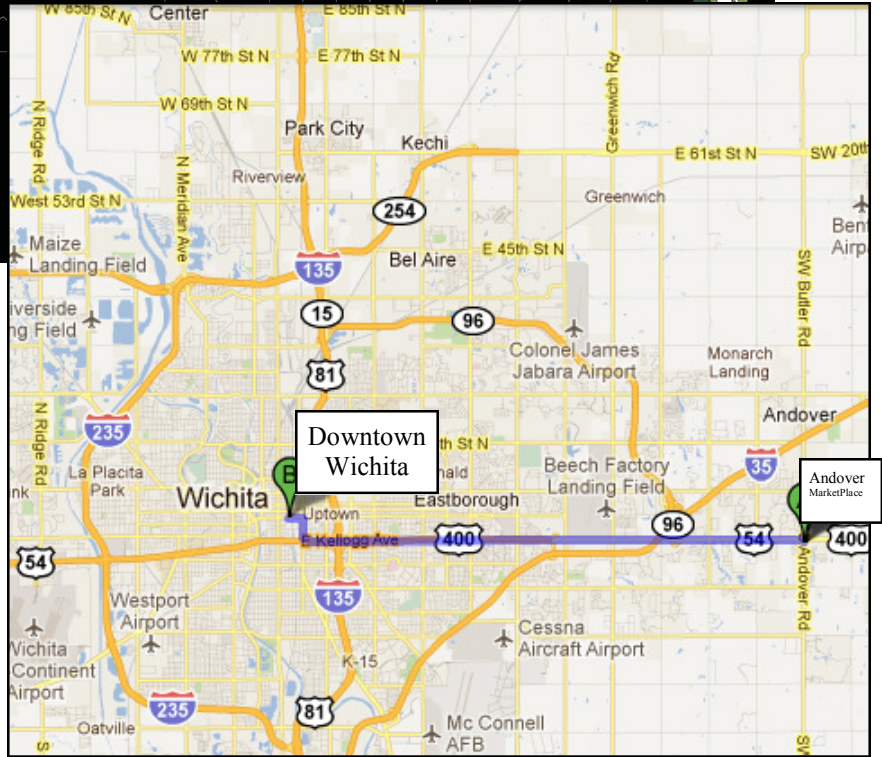
36,988 (cars per day)

Land Available

Site	Acreage	Sq. Ft	Site	Acreage	Sq. Ft.
1	2.06	89,734	7	1.32	57,499
2	2.31	100,624	8	1.06	46,174
3	1.08	47,045	9	13.83	602,435
4	1.25	54,450	10	11.37	495,277
5	1.81	78,844	11	1.52	66,214
6	1.55	67,518			



**11 Miles
East of
Down-
town
Wichita**



Contact **Marty Moody** for more information. 316-634-6600 ext. 106
martym@vantagepointproperties.com
www.vantagepointproperties.com

